

## Tact Switches

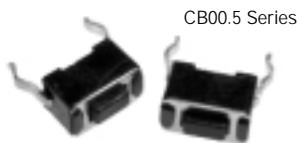
### Features

- Compact design
- Advanced switch technology
- Economical
- Positive tactile action
- Tamper proof application
- Flow solder wash away cleaning
- High quality
- Surface mount versions available
- Can be supplied taped for auto insertion

### Specification

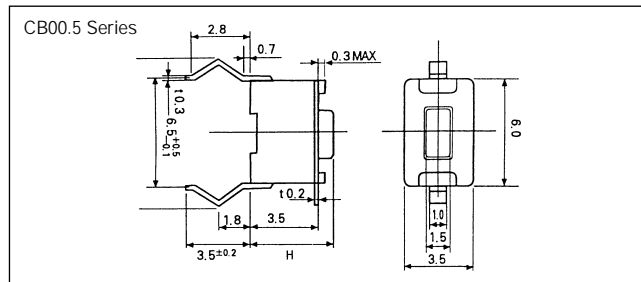
Rating load:	50mA/12V DC
Contact resistance:	100mΩ
Insulation resistance:	>25MΩ
Life:	100 000 operations min
Operating force:	160±50g
Return force:	0.8N
Temperature range:	-20°C to +70°C
Contact material:	Silver plated nickel
Bounce time:	<2msec
Travel:	0.25±0.1m/m

## 3.5x6mm Tact Switches



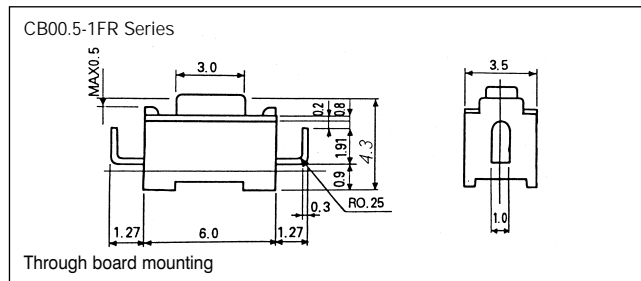
CB00.5 Series

Type No.	Button height (H)
CB00.5-1F	4.3mm
BB00.5-5H	5.0mm



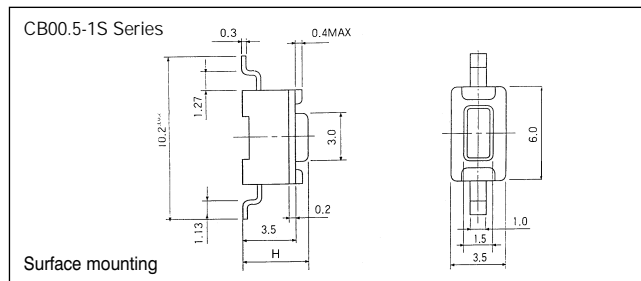
CB00.5-1FR Series

Type No.	Button height (H)
CB00.5-1FR	4.3mm



CB00.5-1S Series

Type No.	Button height (H)
CB00.5-1S	4.3mm
CB00.5-5HS	5.0mm



PCB  
TERMINAL  
BLOCKS

FUSES &  
FUSE-  
HOLDERS

BATTERIES

LED'S

MINIATURE  
SWITCHES

INTERFACE  
MODULES &  
SUPPORTS

ENCLOSURES

IC & PLCC  
SOCKETS

RELAY  
BASES

CONTROL  
PRODUCTS

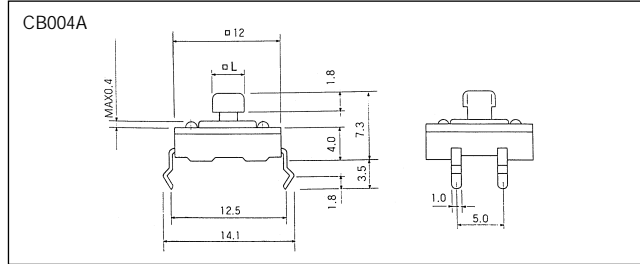


## 12x12mm Tact Switches

CB004 Series



Type No.	Button height (H)
CB004A	7.3mm
CB004F	4.3mm

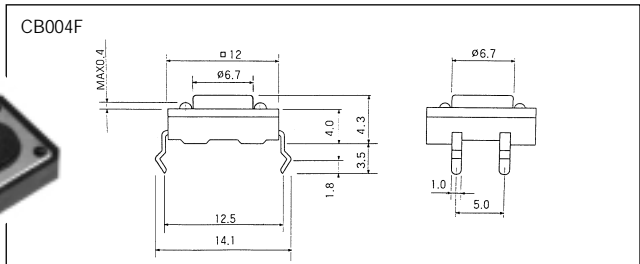


Caps for CB004A



Square Caps	
Type No.	Colour
CK12BK	Black
CK12RD	Red
CK12WH	White

Round Caps	
Type No.	Colour
CKR12BK	Black
CKR12RD	Red
CKR12WH	White



PCB  
TERMINAL  
BLOCKS

FUSES &  
FUSE-  
HOLDERS

BATTERIES

LED'S

MINIATURE  
SWITCHES

INTERFACE  
MODULES &  
SUPPORTS

ENCLOSURES

IC & PLCC  
SOCKETS

RELAY  
BASES

CONTROL  
PRODUCTS