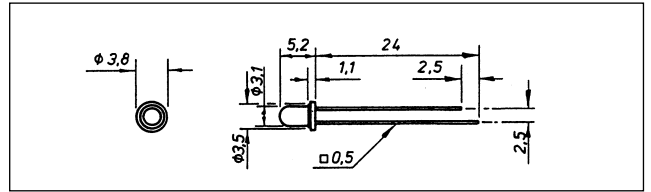


3mm (T1) Standard Output



Features

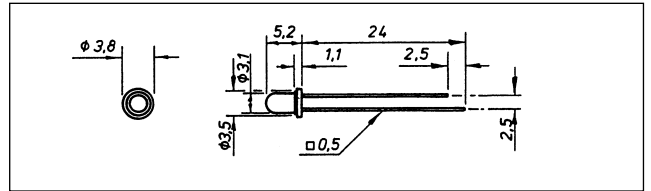
- Competitive pricing
- 4 colours
- Diffused
- Panel mounting bodies
- PC mounting bodies

Specification

Type No	Colour	Finish	Luminous intensity @20mA (mcd)	Forward current I/F Typ.	Forward current I/F Max.	Forward voltage V/F Typ.	Forward voltage V/F Max.	View angle	Wave length (nm)
CL003RD	Red	Diffused	6	20mA	40mA	1.7v	2.0v	40°	655
CL003GD	Green	Diffused	10	20mA	30mA	2.2v	2.6v	40°	568
CL003YD	Yellow	Diffused	8	20mA	30mA	2.1v	2.6v	40°	585
CL003AD	Amber	Diffused	10	20mA	30mA	2.0v	2.6v	40°	635

Cathode = short lead/body flat.

3mm (T1) High Bright



Features

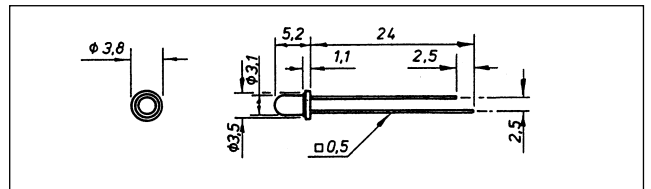
- 4 colours
- Diffused/water clear
- Panel mounting bodies
- PC mounting bodies

Specification

Type No	Colour	Finish	Luminous intensity @20mA (mcd)	Forward current I/F Typ.	Forward current I/F Max.	Forward voltage V/F Typ.	Forward voltage V/F Max.	View angle	Wave length (nm)
CL135RD	Red	Diffused	80	20mA	30mA	2.0v	3.0v	40°	625
CL136RC	Red	Clear	200	20mA	30mA	2.0v	3.0v	30°	625
CL137GD	Green	Diffused	80	20mA	25mA	2.1v	3.0v	40°	560
CL138GC	Green	Clear	200	20mA	25mA	2.1v	3.0v	25°	560
CL139YD	Yellow	Diffused	80	20mA	30mA	2.2v	3.0v	40°	590
CL140YC	Yellow	Clear	200	20mA	30mA	2.2v	3.0v	25°	590
CL150AD	Amber	Diffused	80	20mA	30mA	2.0v	3.0v	40°	610

Cathode = short lead/body flat.

3mm (T1) Bi-colour



Features

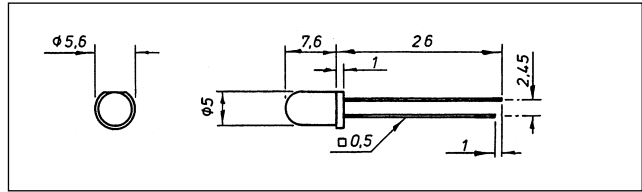
- Competitive pricing
- 2 leg version
- Panel mounting bodies
- PC mounting bodies

Specification

Type No	Colour	Finish	Luminous intensity @20mA (mcd)	Forward current I/F Typ.	Forward current I/F Max.	Forward voltage V/F Typ.	Forward voltage V/F Max.	View angle
CL003RG/2	Red/Green	White	8/38	10mA	30mA	2.2v	2.6v	45°

Cathode = short lead/body flat.

5mm (T1³/₄) Standard Output



Features

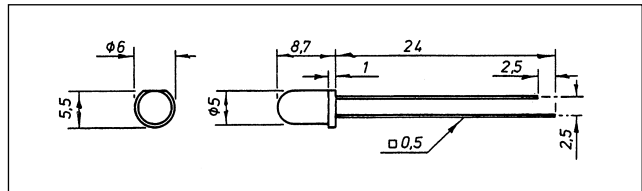
- Competitive pricing
- 4 colours
- Diffused
- Panel mounting bodies
- PC mounting bodies

Specification

Type No	Colour	Finish	Luminous intensity @20mA (mcd)	Forward current I/F Typ.	I/F Max.	Forward voltage V/F Typ.	V/F Max.	View angle	Wave length (mm)
CL005RD	Red	Diffused	6	20mA	40mA	1.7v	2.0v	30°	655
CL005GD	Green	Diffused	10	20mA	30mA	2.2v	2.6v	30°	568
CL005YD	Yellow	Diffused	8	20mA	30mA	2.1v	2.6v	30°	585
CL005AD	Amber	Diffused	10	20mA	30mA	2.0v	2.6v	30°	635

Cathode = short lead/body flat.

5mm (T1³/₄) High Bright



Features

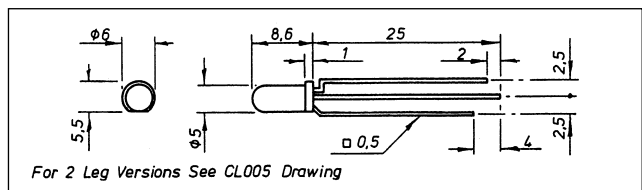
- Competitive pricing
- 4 colours
- Diffused/water clear
- Panel mounting bodies
- PC mounting bodies

Specification

Type No	Colour	Finish	Luminous intensity @20mA (mcd)	Forward current I/F Typ.	I/F Max.	Forward voltage V/F Typ.	V/F Max.	View angle	Wave length (mm)
CL141RD	Red	Diffused	100	20mA	30mA	2.0v	3.0v	40°	650
CL142RC	Red	Clear	200	20mA	30mA	2.0v	3.0v	30°	650
CL143GD	Green	Diffused	100	20mA	25mA	2.1v	3.0v	40°	563
CL144GC	Green	Clear	250	20mA	25mA	2.1v	3.0v	30°	563
CL145YD	Yellow	Diffused	100	20mA	30mA	2.2v	3.0v	40°	585
CL146YC	Yellow	Clear	200	20mA	30mA	2.2v	3.0v	30°	585
CL151AD	Amber	Diffused	160	20mA	30mA	2.0v	3.0v	40°	610

Cathode = short lead/body flat.

5mm (T1³/₄) Bi-colour/Tri-colour & flashing



Features

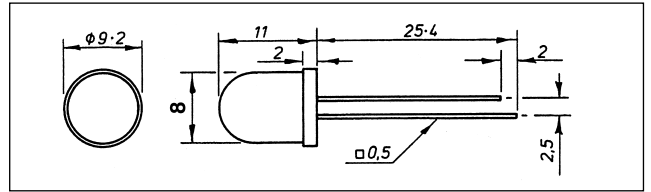
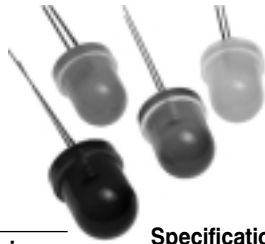
- Red/green bi-colour (-/2=2 leg, -/3=3 leg)
- 3 leg tri-colour
- Red flashing
- Panel mounting bodies
- PC mounting bodies

Specification

Type No	Colour	Finish	Luminous intensity @20mA (mcd)	Forward current I/F Typ.	I/F Max.	Forward voltage V/F Typ.	V/F Max.	View angle
CL005RG/2	Red/Green	Diffused	10/50	10mA	30mA	2.2v	2.6v	60°
CL005RG/3	Red/Green	Diffused	10/50	10mA	30mA	2.2v	2.6v	60°
CL005RD/F	Red/flash	Diffused	10	25mA	35mA	5.0v	12v	60°
CL005GD/F	Green/flash	Diffused	50	25mA	35mA	5.0v	12v	60°
CL005YD/F	Yellow/flash	Diffused	35	25mA	35mA	5.0v	12v	60°

Cathode = short lead/body flat.

8mm High Bright



Features

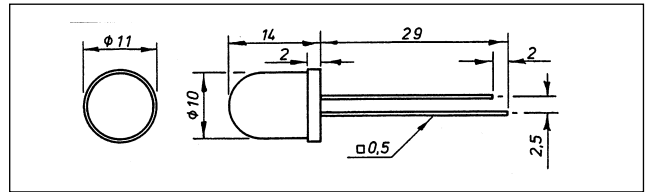
- Competitive pricing
- 4 colours
- Diffused
- P.C. mounting bodies

Specification

Type No	Colour	Finish	Luminous intensity @20mA (mcd)	Forward current I/F Typ.	Forward current I/F Max.	Forward voltage V/F Typ.	Forward voltage V/F Max.	View angle	Wave length (mm)
CL008RD	Red	Diffused	32	20mA	40mA	2.2v	2.6v	55°	700
CL008GD	Green	Diffused	50	20mA	30mA	2.2v	2.6v	55°	568
CL008YD	Yellow	Diffused	40	20mA	30mA	2.2v	2.6v	55°	585
CL008AD	Amber	Diffused	45	20mA	30mA	2.1v	2.6v	55°	635

Cathode =short lead.

10mm High Bright



Features

- Competitive pricing
- 3 colours
- Diffused
- Mounting bodies

Specification

Type No	Colour	Finish	Luminous intensity @20mA (mcd)	Forward current I/F Typ.	Forward current I/F Max.	Forward voltage V/F Typ.	Forward voltage V/F Max.	View angle	Wave length (mm)
CL010/RD	Red	Diffused	15	10mA	20mA	2.0v	2.6v	60°	650
CL010/GD	Green	Diffused	40	10mA	30mA	2.2v	2.6v	60°	563
CL010/YD	Yellow	Diffused	30	10mA	30mA	2.1v	2.6v	60°	585

Cathode =short lead.

3mm & 5mm LED panel mounting clip

Features

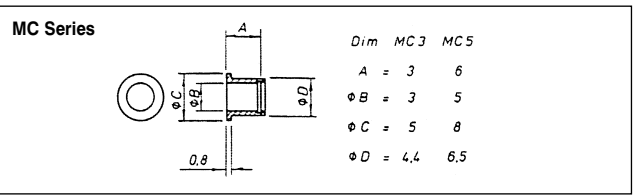
- One piece, black moulding
- Self retaining
- Secure fixing



Type No.
MC3 for 3mm LEDs
MC5 for 5mm LEDs
MC5/T for 5mm LEDs

Specification

Body	Polycarbonate
Colour	Black



5mm LED panel mounting bodies

Features

- One piece, black moulding
- Recessed or prominent styles
- Self retaining
- Secure fixing

CPP05



Specification

Body	Polycarbonate
Colour	Black

