
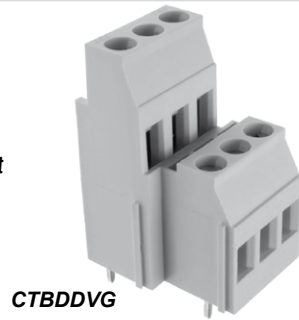
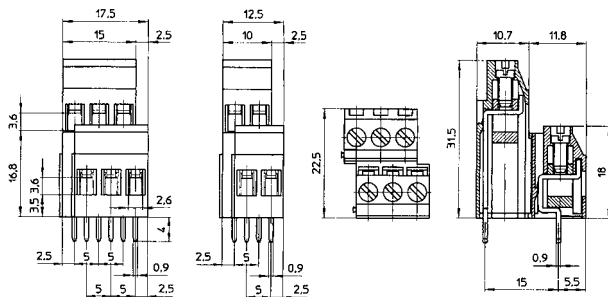


5mm Pitch Double Decker Rising Clamp Terminal

- 4 & 6 pole double interlocking mechanism for increased strength
- Double decker
- Moulded in green UL94-V0 flame retardant PA
- Professional rising clamp terminals
- 4mm² cable entry
-  approved
- Guided pin alignment



CTBDDVG



CTBDDVG series

Rating	24A/320V, UL=16A, CUL=16A, IMQ=24A, VDE=24A
--------	---

Dielectric strength	≥3kV
---------------------	------

Impulse withstand voltage	6kV
---------------------------	-----

Working temperature	110°C
---------------------	-------

Moulding	UL94-V0 flame retardant PA
----------	----------------------------

Pin/terminal	Tinned, nickel plated brass
--------------	-----------------------------


Wire clamp	Nickel plated brass
------------	---------------------

Screw/torque	M3 steel, zinc plated 0.5Nm
--------------	-----------------------------

Recommended PCB hole size	ø1.3mm
---------------------------	--------

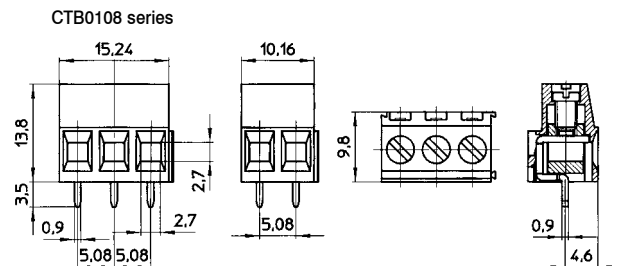
Type No.	Poles	Length
CTBDDVG/2	4	12.5mm
CTBDDVG/3	6	17.5mm

5.08mm Pitch Standard Profile Rising Clamp Terminal

- 2 & 3 pole double interlocking mechanism for increased strength
- 4-12 pole pre-assembled
- Moulded in green UL94-V0 flame retardant PA
- Professional rising clamp terminals
- 2.5mm² cable entry
-  approved
- Guided pin alignment
- Captive screws



CTB0108



CTB0108 series

Type No.	Poles	Length
CTB0108/2	2	10.16mm
CTB0108/3	3	15.24mm
CTB0108/4	4	20.32mm
CTB0108/5	5	25.4mm
CTB0108/6	6	30.48mm
CTB0108/7	7	35.56mm
CTB0108/8	8	40.64mm
CTB0108/9	9	45.72mm
CTB0108/10	10	50.80mm
CTB0108/11	11	55.88mm
CTB0108/12	12	60.96mm

Rating	24A/250V, UL=14A, CUL=14A, IMQ=24A, VDE=24A
--------	---

Dielectric strength	≥2kV
---------------------	------

Impulse withstand voltage	4kV
---------------------------	-----

Working temperature	110°C
---------------------	-------

Moulding	UL94-V0 flame retardant PA
----------	----------------------------

Pin/terminal	Tinned, nickel plated brass
--------------	-----------------------------

Wire clamp	Nickel plated brass
------------	---------------------

Screw/torque	M3 steel, zinc plated 0.5Nm
--------------	-----------------------------

Recommended PCB hole size	ø1.3mm
---------------------------	--------