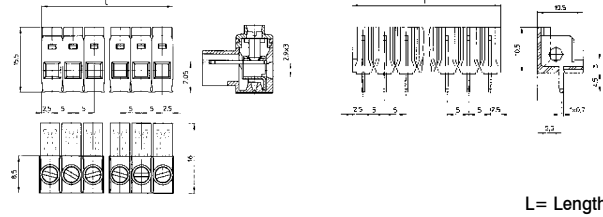


5mm Pitch Plug-in for Vertical or 90° mounting Rising Clamp Terminal

- Unique 36 pole strip
- Easily cut to required number of poles
- Can be supplied pre-cut to specified number of poles
- Dual horizontal or vertical mounting
- Moulded in grey UL94-V0 flame retardant Lexan
- Professional rising clamp terminals
- 4mm² cable entry
- cULus, CE, approved
- Optional polarising clips
- Anti solder wicking
- Guided pin alignment
- Captive screws

Rating	18A/250V, UL=14A, CUL=14A, IMQ=18A
Dielectric strength	≥2.5kV
Impulse withstand voltage	4kV
Working temperature	85°C
Moulding	UL94-V0 flame retardant Lexan
Pin/terminal	Tinned, nickel plated brass
Rising clamp	Zinc plated steel
Screw/torque	M2.5 steel, zinc colour plated/0.4Nm
Recommended PCB hole size	ø1.3mm

CTB7300 series

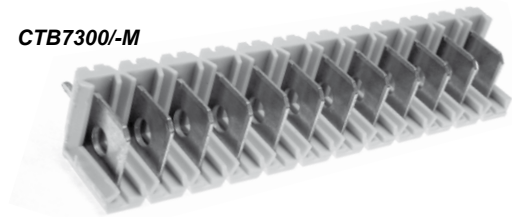


L = Length

PCB mounting male: 1-36 poles

Type No.	Poles	Length	Type No.	Poles	Length
CTB7300/2M	2	10mm	CTB7300/8M	8	40mm
CTB7300/3M	3	15mm	CTB7300/9M	9	45mm
CTB7300/4M	4	20mm	CTB7300/10M	10	50mm
CTB7300/5M	5	25mm	CTB7300/11M	11	55mm
CTB7300/6M	6	30mm	CTB7300/12M	12	60mm
CTB7300/7M	7	35mm	CTB7300/36M	36	180mm

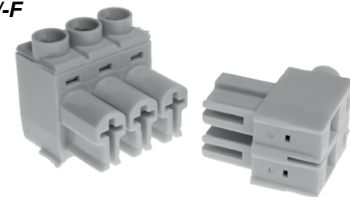
CTB7300/-M



Female connector: 1-36 poles

Type No.	Poles	Length	Type No.	Poles	Length
CTB7300/2F	2	10mm	CTB7300/8F	8	40mm
CTB7300/3F	3	15mm	CTB7300/9F	9	45mm
CTB7300/4F	4	20mm	CTB7300/10F	10	50mm
CTB7300/5F	5	25mm	CTB7300/11F	11	55mm
CTB7300/6F	6	30mm	CTB7300/12F	12	60mm
CTB7300/7F	7	35mm	CTB7300/36F	36	180mm

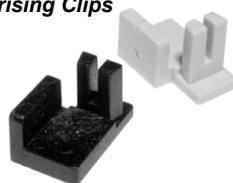
CTB7300/-F



Polarising Clip

Type No.	
CTB7300/Clip	1 pair

Polarising Clips



Fitted to each end of the male connector ensures correct vertical or horizontal orientation of the female part