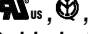
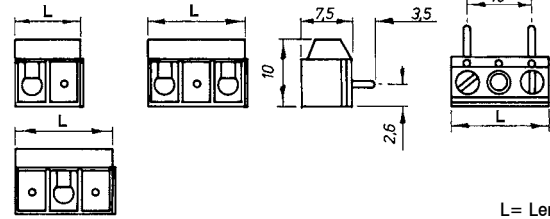


## 10mm Pitch Low Profile 90° Screw Terminal

- 1 & 2 pole interlocking
- 1 pole in 10mm & 15mm length
- 2-12 pole pre-assembled
- Test probe facility
- 90° mounting
- Moulded in grey UL94-V0 flame retardant Lexan
- Wire protector terminals
- 1.5mm<sup>2</sup> cable entry
-  approved
- Guided pin alignment
- Captive screw
- Anti solder wicking terminals



CTB6050 Series



L = Length

Type No.	Poles	Length
CTB6050/1	1	10mm
CTB6050/1/15	1	15mm
CTB6050/2	2	15mm
CTB6050/3	3	25mm
CTB6050/4	4	35mm
CTB6050/5	5	45mm
CTB6050/6	6	55mm
CTB6050/7	7	65mm
CTB6050/8	8	75mm
CTB6050/9	9	85mm
CTB6050/10	10	95mm
CTB6050/11	11	105mm
CTB6050/12	12	115mm

Rating 13.5A/500V, UL=14A, CUL=14A, IMQ=13.5A, VDE=13.5A

Dielectric strength ≥3kV

Impulse withstand voltage 6kV

Working temperature 85°C

Moulding UL94-V0 flame retardant Lexan


Pin/terminal Tinned, nickel plated brass

Wire protect Tin plated phosphor bronze

Screw/torque M2.5 steel, zinc colour plated/0.4Nm

Recommended PCB hole size ø1.1mm

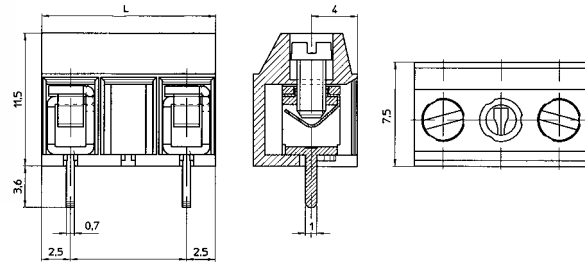
## 10mm Pitch Commercial Low Profile Screw Terminal

- 2-6 pole solid block
- End stackable
- Moulded in green UL94-V0 flame retardant PA
- Wire protector terminals
- 2.5mm<sup>2</sup> cable entry
-  approved
- Captive screws
- Anti solder wicking terminal
- Guided pin alignment

CTB55VN



CTB55VN series



Type No.	Poles	Length
CTB55VN/2	2	15mm
CTB55VN/3	3	25mm
CTB55VN/4	4	35mm
CTB55VN/5	5	45mm
CTB55VN/6	6	55mm

Rating 24A/500V, UL=16A, CUL=16A, IMQ=24A, VDE=24A

Dielectric strength ≥2kV

Impulse withstand voltage 6kV

Working temperature 110°C

Moulding UL94-V0 flame retardant PA

Pin/terminal Tinned, nickel plated brass

Screw/torque M2.5 steel, zinc & colour plated /0.4Nm max

Recommended PCB hole size ø1.3mm