

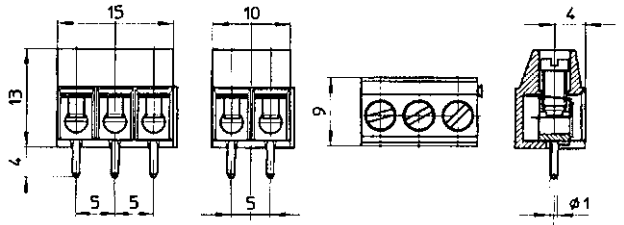
5mm Pitch Standard Profile Screw Terminal

- 2 & 3 pole interlocking
- 4-12 pole solid block end stackable
- Guided pin alignment
- Moulded in grey UL94-V0 flame retardant Lexan
- Wire protector terminals
- 2.5mm² cable entry
- CE, UL, RoHS, REACH, approved
- Anti solder wicking terminals

CTB1000



CTB1000 series



Type No.	Poles	Length
CTB1000/2	2	10mm
CTB1000/3	3	15mm
CTB1000/4	4	20mm
CTB1000/5	5	25mm
CTB1000/6	6	30mm
CTB1000/7	7	35mm
CTB1000/8	8	40mm
CTB1000/9	9	45mm
CTB1000/10	10	50mm
CTB1000/11	11	55mm
CTB1000/12	12	60mm

Specification

Rating	24A/250V, UL = 16A, CUL = 16A, IMQ = 24A, VDE = 24A
Dielectric strength	≥2.5kV
Working temperature	85°C
Impulse withstand voltage	6kV
Moulding	UL94-V0 flame retardant Lexan
Pin/terminal	tinned, nickel plated brass
Wire protector	Tin plated phosphor bronze
Screw/torque	M3 steel, zinc plated 0.5Nm
Recommended PCB hole size	ø1.1mm

5mm Pitch Standard Profile 90° Screw Terminal

- 2-12 pole solid block end stackable
- Guided pin alignment
- Moulded in grey UL94-V0 flame retardant Lexan
- Wire protector terminals
- 2.5mm² cable entry
- CE, UL, RoHS, REACH, approved
- Anti solder wicking terminals

CTB1050

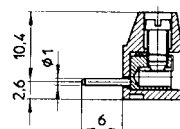


Type No.	Poles	Length
CTB1050/2	2	10mm
CTB1050/3	3	15mm
CTB1050/4	4	20mm
CTB1050/5	5	25mm
CTB1050/6	6	30mm
CTB1050/7	7	35mm
CTB1050/8	8	40mm
CTB1050/9	9	45mm
CTB1050/10	10	50mm
CTB1050/11	11	55mm
CTB1050/12	12	60mm

Specification

Rating	24/250V, UL = 16A, CUL = 16A, IMQ = 24A, VDE = 24A
Dielectric strength	≥2.5kV
Impulse withstand voltage	4kV
Working temperature	85°C
Moulding	UL94-V0 flame retardant Lexan
Pin/terminal	tinned, nickel plated brass
Wire protector	Tin plated phosphor bronze
Screw/torque	M3 steel, zinc plated 0.5Nm
Recommended PCB hole size	ø1.1mm

CTB1050 series



For other dimensions see CTB1000