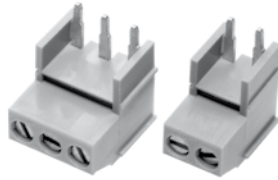


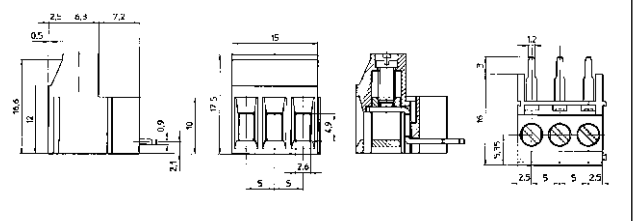
### 5mm Pitch Large Cable Entry 90° Rising clamp terminal

- 2 & 3 pole double interlocking mechanism for increased strength
- Moulded in green UL94-V0 flame retardant PA
- Professional rising clamp terminals
- 2 x 2.5mm<sup>2</sup> cable entry
- CE, UL, RoHS, REACH, approved

CTB09HG



CTB09HG series



Type No.	Poles	Length
CTB09HG/2	2	10mm
CTB09HG/3	3	15mm
CTB09HG/4	4	20mm
CTB09HG/5	5	25mm
CTB09HG/6	6	30mm
CTB09HG/7	7	35mm
CTB09HG/8	8	40mm
CTB09HG/9	9	45mm
CTB09HG/10	10	50mm
CTB09HG/11	11	55mm
CTB09HG/12	12	60mm

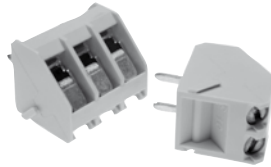
#### Specification

Rating	24A/630Vac, UL=16A, CUL=16A, IMQ=24A, VDE=24A
Dielectric strength	>2kV
Impulse withstand voltage	6kV
Working temperature	110°C
Moulding	UL94-V0 flame retardant PA
Pin/terminal	Tinned, nickel plated brass
Wire Clamp	Nickel plated brass
Screw/torque	M3 steel, zinc & colour plated/0.5Nm max
Recommended PCB hole size	ø1.5mm

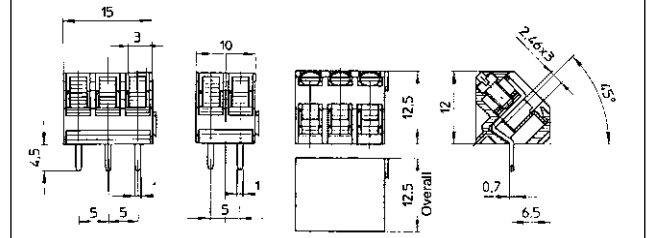
### 5mm Pitch 45° Low Profile Rising Clamp Terminal

- 2 & 3 pole interlocking
- 4-12 pole pre-assembled
- 45° mounting
- Moulded in grey UL94-V0 flame retardant PA
- Professional rising clamp terminals
- 4mm<sup>2</sup> cable entry
- CE, UL, RoHS, REACH, approved
- Captive screw

CTB3000



CTB3000 series



Type No.	Poles	Length
CTB3000/2	2	10mm
CTB3000/3	3	15mm
CTB3000/4	4	20mm
CTB3000/5	5	25mm
CTB3000/6	6	30mm
CTB3000/7	7	35mm
CTB3000/8	8	40mm
CTB3000/9	9	45mm
CTB3000/10	10	50mm
CTB3000/11	11	55mm
CTB3000/12	12	60mm.

#### Specification

Rating	24A/160V, UL=16A, CUL=16A, IMQ=24A, VDE=24A
Dielectric strength	≥1.25kV
Impulse withstand voltage	2.5kV
Working temperature	110°C
Moulding	UL94-V0 flame retardant PA
Pin/terminal	Tinned, nickel plated brass
Rising clamp	Zinc plated steel
Screw/torque	M2.5 steel, zinc colour plated/0.4Nm
Recommended PCB hole size	ø1.3mm