
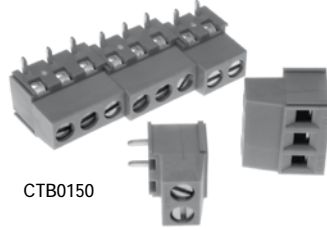


### 5mm Pitch Standard Profile 90° Rising Clamp Terminal

- 2 & 3 pole double interlocking mechanism for increased strength
- 4-12 pole solid block end stackable
- Moulded in green UL94-V0 flame retardant PA
- Professional rising clamp terminals
- 2.5mm<sup>2</sup> cable entry
-  approved
- Guided pin alignment
- Captive screws

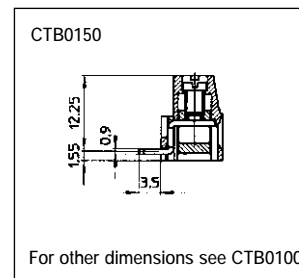


CTB0150

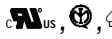
Type No.	Poles	Length
CTB0150/2	2	10mm
CTB0150/3	3	15mm
CTB0150/4	4	20mm
CTB0150/5	5	25mm
CTB0150/6	6	30mm
CTB0150/7	7	35mm
CTB0150/8	8	40mm
CTB0150/9	9	45mm
CTB0150/10	10	50mm
CTB0150/11	11	55mm
CTB0150/12	12	60mm

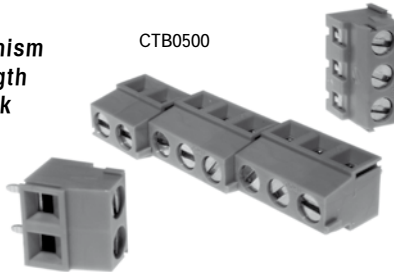
#### Specification

Rating	24A/250V, UL=14A, CUL=14A, IMQ=24A, VDE=24A
Dielectric strength	≥2.5kV
Impulse withstand voltage	4kV
Working temperature	110°C
Moulding	UL94-V0 flame retardant PA
Pin/terminal	Tinned, nickel plated brass
Wire clamp	Nickel plated brass
Screw/torque	M3 steel, zinc plated/0.5Nm
Recommended PCB hole size	ø1.3mm



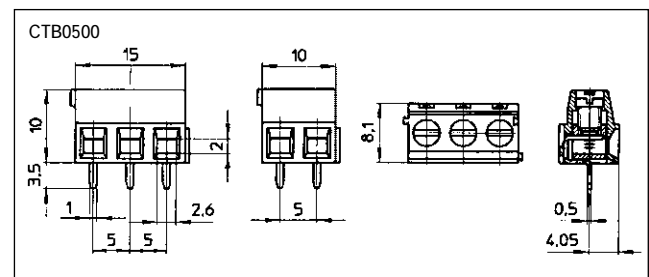
### 5mm Pitch Low Profile Rising Clamp Terminal

- 2 & 3 pole double interlocking mechanism for increased strength
- 4-12 pole solid block end stackable
- Moulded in green UL94-V0 flame retardant PA
- Professional rising clamp terminals
- 1.5mm<sup>2</sup> cable entry
-  approved
- Guided pin alignment
- Captive screw



CTB0500

Type No.	Poles	Length
CTB0500/2	2	10mm
CTB0500/3	3	15mm
CTB0500/4	4	20mm
CTB0500/5	5	25mm
CTB0500/6	6	30mm
CTB0500/7	7	35mm
CTB0500/8	8	40mm
CTB0500/9	9	45mm
CTB0500/10	10	50mm
CTB0500/11	11	55mm
CTB0500/12	12	60mm



#### Specification

Rating	24A/250V, UL=14A, CUL=14A, IMQ=14A, VDE=14A
Dielectric strength	>2kV
Impulse withstand voltage	4kV
Working temperature	110°C
Moulding	UL94-V0 flame retardant PA
Pin/terminal	Tinned, nickel plated brass
Wire clamp	Nickel plated brass
Screw/torque	M3 steel, zinc plated/0.5Nm
Recommended PCB hole size	ø1.3mm