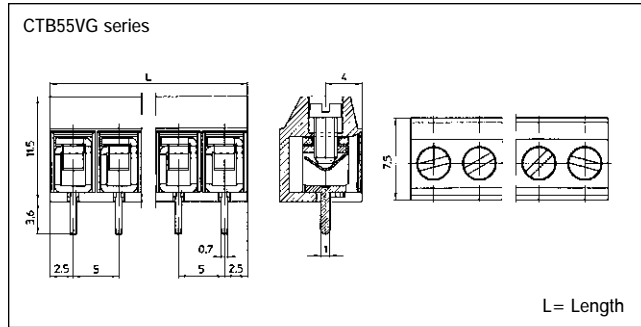


5mm Pitch Commercial Low Profile Screw Terminal

- 2-12 pole solid block
- End stackable
- Moulded in green UL94-V0 flame retardant PA
- Wire protector terminals
- 2.5mm² cable entry
- CE, RoHS, REACH, approved
- Captive screws
- Anti solder wicking terminal
- Guided pin alignment

CTB55VG



Type No.	Poles	Length
CTB55VG/2	2	10mm
CTB55VG/3	3	15mm
CTB55VG/4	4	20mm
CTB55VG/5	5	25mm
CTB55VG/6	6	30mm
CTB55VG/7	7	35mm
CTB55VG/8	8	40mm
CTB55VG/9	9	45mm
CTB55VG/10	10	50mm
CTB55VG/11	11	55mm
CTB55VG/12	12	60mm

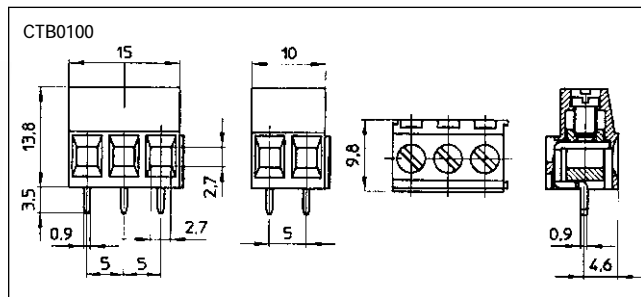
Specification

Rating	24A/250V, UL=16A, CUL=16A, IMQ=24A, VDE=24A
Dielectric strength	≥2kV
Impulse withstand voltage	3kV
Working temperature	110°C
Moulding	UL94-V0 flame retardant PA
Pin/terminal	Tinned, nickel plated brass
Screw/torque	M2.5 steel, zinc plated/0.4Nm max
Recommended PCB hole size	ø1.3mm

5mm Pitch Standard Profile Rising Clamp Terminal

- 2 & 3 pole double Interlocking mechanism for increased strength
- 4-12 pole solid block end stackable
- Moulded in green UL94-V0 flame retardant PA
- Professional rising clamp terminals
- 2.5mm² cable entry
- CE, RoHS, REACH, approved
- Guided pin alignment
- Captive screws

CTB0100



Type No.	Poles	Length
CTB0100/2	2	10mm
CTB0100/3	3	15mm
CTB0100/4	4	20mm
CTB0100/5	5	25mm
CTB0100/6	6	30mm
CTB0100/7	7	35mm
CTB0100/8	8	40mm
CTB0100/9	9	45mm
CTB0100/10	10	50mm
CTB0100/11	11	55mm
CTB0100/12	12	60mm

Specification

Rating	24A/250V, UL=14A, CUL=14A, IMQ=24A, VDE=24A
Dielectric strength	≥2.5kV
Impulse withstand voltage	4kV
Working temperature	110°C
Moulding	UL94-V0 flame retardant PA68
Pin/terminal	Tinned, nickel plated brass
Wire clamp	Nickel plated brass
Screw/torque	M3 steel, zinc plated/0.5Nm
Recommended PCB hole size	ø1.3mm