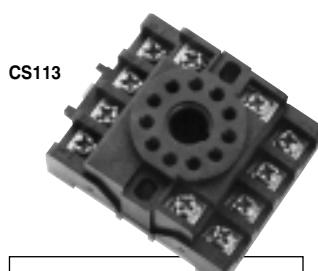
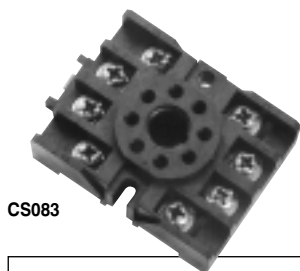
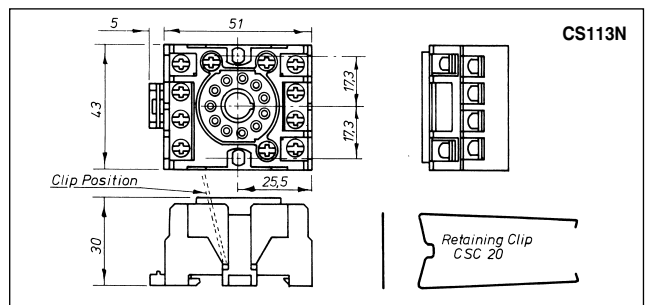
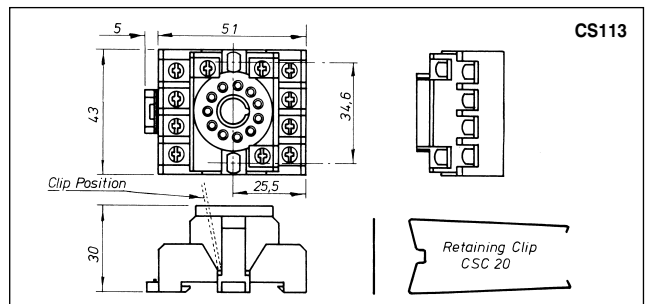
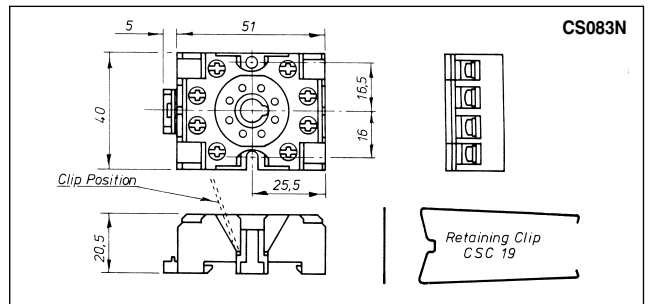
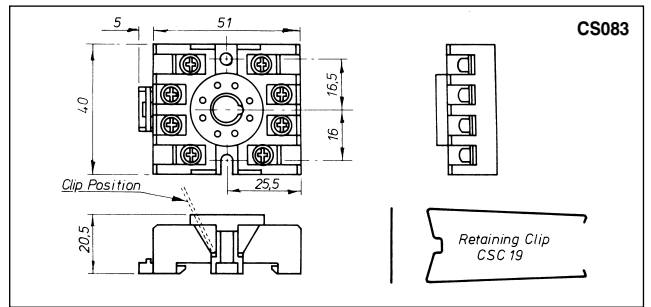


Compact 8-11 Pin Commercial Relay Bases

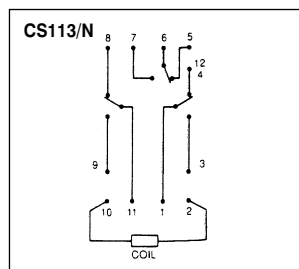
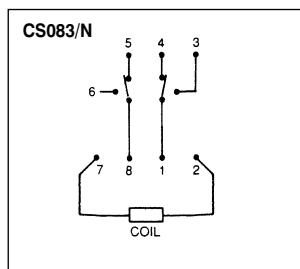
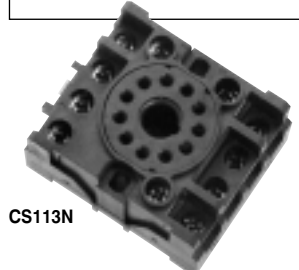
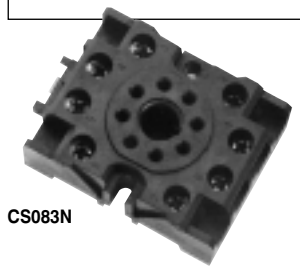
Features

- Din rail (EN50022) or chassis mount
- Screw driver din release clip
- Captive washers for ease of wire insertion
- Accepts fork, ferule and ring terminals (ring for non IP20 only)
- 2 x 2.5mm² cable acceptance
- IP20 finger protection types
- Relay retaining clip
- Slotted mounting holes for common fixing centres
- Tubular contacts for reliability
- Dual terminal numbering to IEC 67 & DIN 46 199
- G rail adaptor available



Type No	
CS083	8 pin open
CS083N	8 pin IP20 finger protection
CSC19	Retaining clip

Type No	
CS113	11 pin open
CS113N	11 pin IP20 finger protection
CSC20	Retaining clip



Specification

Rating:	10A/600VAC
Dielectric strength:	>2KV
Working temperature:	110°C
Short period:	135°C
Moulding:	UL94-V1 Self extinguishing glass filled PPO
Contacts:	Tin plated brass
Screws:	6μ zinc and colour passivated and tropicalised steel M3.5 combination head
Approved:	CE

PCB
TERMINAL
BLOCKS

FUSES &
FUSE-
HOLDERS

BATTERIES

LED'S

MINIATURE
SWITCHES

INTERFACE
MODULES &
SUPPORTS

ENCLOSURES

IC & PLCC
SOCKETS

RELAY
BASES

CONTROL
PRODUCTS



FM28614
BS EN ISO 9002:
1994

Tel: +44 (0)1727 864437 Fax: +44 (0)1727 855400
E-mail: info@camden-electronics.co.uk Website: www.camden-electronics.co.uk

Because we operate a constant improvement policy, our products are subject to change without notice.

