

## 3mm & 5mm LED panel mounting clip

### Features

- One piece, black moulding
- Self retaining
- Secure fixing



MC5/T

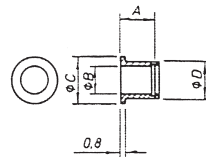
### Type No.

MC3 for 3mm LEDs  
MC5 for 5mm LEDs  
MC5/T for 5mm LEDs

### Specification

Body Polycarbonate  
Colour Black

### MC Series



Dim	MC3	MC5
A	3	6
$\phi B$	3	5
$\phi C$	5	8
$\phi D$	4.4	6.5

## 5mm LED panel mounting bodies

### Features

- One piece, black moulding
- Recessed or prominent styles
- Self retaining
- Secure fixing

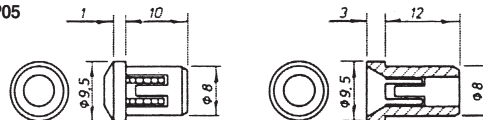
CPP05



### Specification

Body Polycarbonate  
Colour Black

### CPP05



*Rec - Panel Cutout  $\phi 8$*

CPR05



FM28614  
BS EN ISO 9001:  
2000

Tel: +44 (0)1727 864437 Fax: +44 (0)1727 855400  
E-mail: [camdeninfo@camdenelec.com](mailto:camdeninfo@camdenelec.com) Website: [www.camdenelec.com](http://www.camdenelec.com)

Because we operate a constant improvement policy, our products are subject to change without notice.

**CAMDEN**  
E L E C T R O N I C S L T D

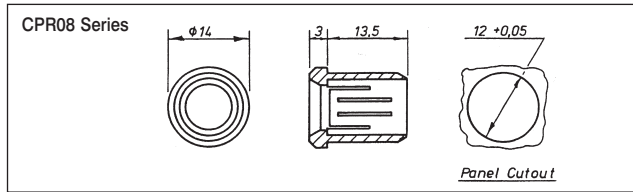
## 8mm LED panel mounting body

### Features

- One piece, black moulding
- Recessed design
- Self retaining
- Secure fixing



Type No.	Style
CPR08	Recessed



### Specification

Body	Polycarbonate
Colour	Black

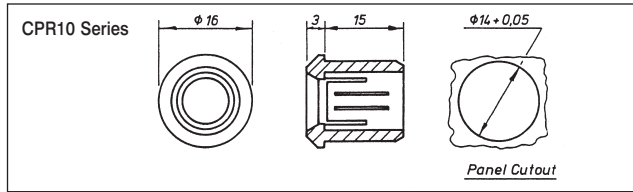
## 10mm LED panel mounting body

### Features

- One piece, black moulding
- Recessed design
- Self retaining
- Secure fixing



Type No.	Style
CPR10	Recessed



### Specification

Body	Polycarbonate
Colour	Black

PCB  
TERMINAL  
BLOCKS

INTER-  
CONNECTION

FUSES &  
FUSE-  
HOLDERS

BATTERIES

LED's

MINIATURE  
SWITCHES

INTERFACE  
MODULES &  
SUPPORTS

ENCLOSURES

IC & PLCC  
SOCKETS

RELAY  
BASES

CONTROL  
PRODUCTS