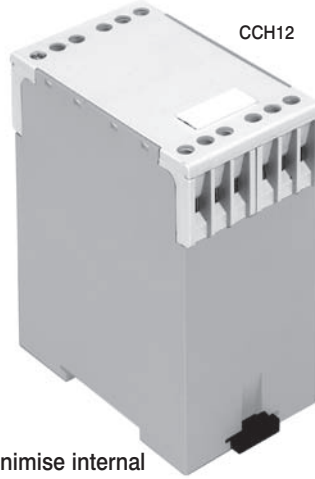


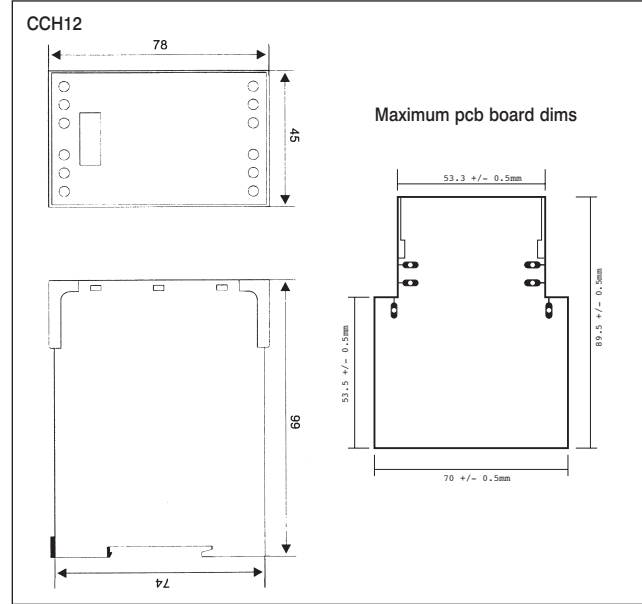
Controls Housing (Din Rail mounting)

Features

- 12 terminals
- Internal PCB guides
- Snap fit Din Rail mounting fixtures
- Grey Flame Retardant UL 94V0 Lexan
- Removable top cover
- Cable entry 2 x 2.5mm² solid or 2 x 1.5mm² stranded and terminated
- Integral marker plate
- For G rail mountings see optional adapters
- Terminals have pcb pins to minimise internal wiring



Type No.	Description
CCH12	12 terminal controls housing



FM28614
BS EN ISO
9001:
2000

Tel: +44 (0)1727 864437 Fax: +44 (0)1727 855400
E-mail: camdeninfo@camdenelec.com Website: www.camdenelec.com

Because we operate a constant improvement policy, our products are subject to change without notice.

CAMDEN
E L E C T R O N I C S L T D